

outdoor

Nude

Rectangular dining table / mesa rectangular

studio expormim 2018

C134



Structure made of stainless steel tube, finished with polyester powder. Two tabletop options: Trespa® HPL 8 mm/0.31" thick and Kerlite® porcelain. Delivered unassembled.

Estructura fabricada en tubo de acero inoxidable, acabado en pintura de polvo de poliéster. Dos opciones de tablero: HPL Trespa® de 8 mm y porcelánico Kerlite®. Se sirven desmontadas.

Shipment details

Qty 1 dining table (1 box)

Volume 0,26 m3 / 9.2 ft3

HPL Top option

Gross weight 48 kg / 106 lb

Net weight 38 kg / 84 lb

Kerlite Top option

Gross weight 63 kg / 139 lb

Net weight 53 kg / 117 lb

Item dimensions

(width x depth x height)

220 x 100 x 74 cm

86.5" x 39.25" x 29.25"

74
29.25"

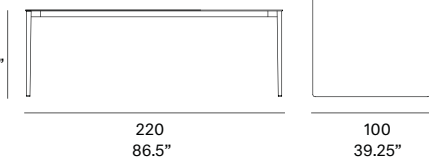
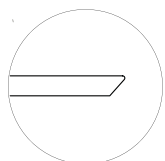
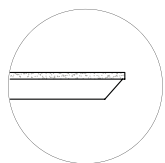


Table top options:



- Trespa® HPL 8 mm/0.31" thick.



- Kerlite® porcelain 3 mm/0.12" +
Trespa® HPL 8 mm/0.31" thick.

expormim

Expormim S.A.
Pol. Ind. Jaime I
46640 Mogente (Valencia) Spain
+34 962 295 144/5
export@expormim.com
www.expormim.com

Expormim USA LLC
(212) 204-8572
usa@expormim.com
www.expormim.com

1/2

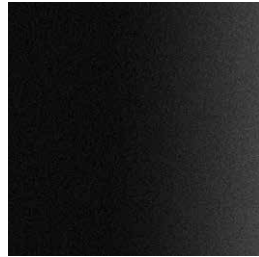
Nude. Outdoor

Frame / estructura

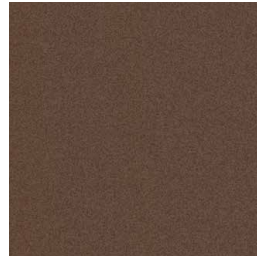
metallic finishes / metales



100 White



101 Black



108 FT oxide
fine textured

Top / tapa

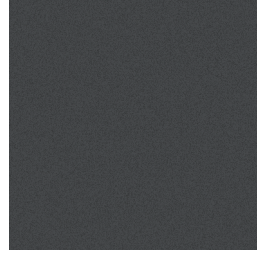
HPL Trespa®



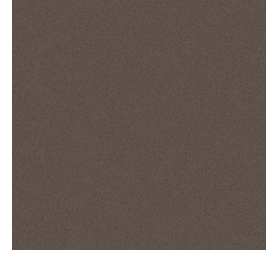
300 White



302 Grey



303 Anthracite



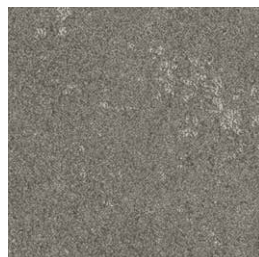
208 Natural greige

Top / tapa

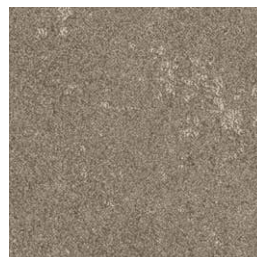
Kerlite®



K5 Perle



K6 Cendre



K7 Noisette